

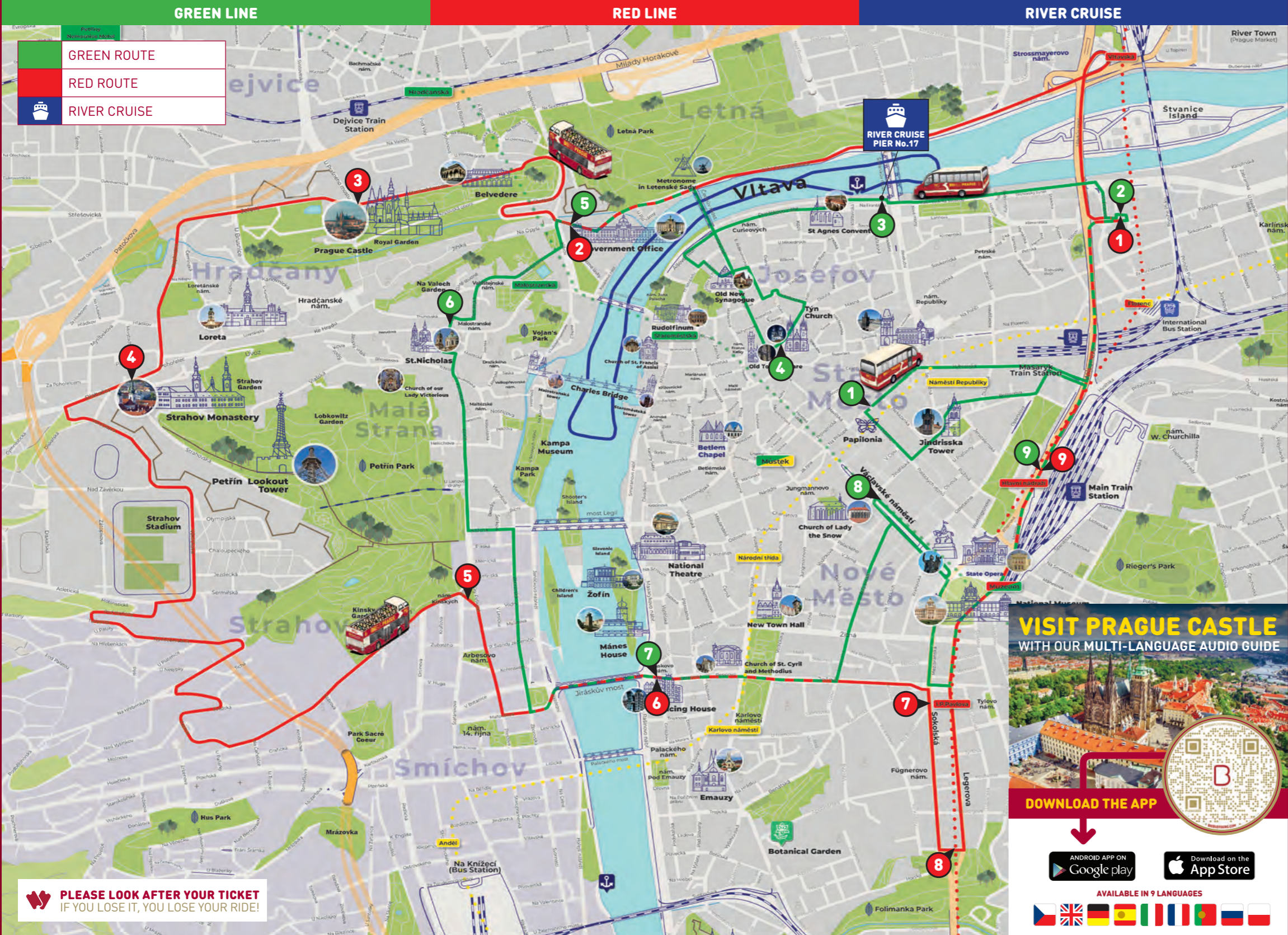
DISCOVER PRAGUE

LIVE CHAT WITH US AT [BIGBUSTOURS.COM/contactPRG](https://bigbustours.com/contactPRG)
+420 602 405 701



BIG HIGHLIGHTS

THINGS TO DO & SEE AT OUR STOPS!



GREEN LINE			MAJOR ATTRACTIONS
1		NA PŘÍKOPĚ	Hybernia Theatre The Powder Gate Municipal House Old Town Square
2	1	HOTEL HILTON	Main Point Karlín Florenc Bus Station
3		NEMOCNICE NA FRANTIŠKU	The boat deck Ministry of Industry and Trade Convent of St. Agnes of Bohemia
4		STAROMĚSTSKÉ NÁMĚSTÍ	Old Town Square Týn Cathedral Old Town Astronomical Clock Old Town Hall
5	2	U BRUSKÝCH KASÁREN	Old Castle Stairs Prague Castle Wallenstein Garden Government of the Czech Republic
6		MALOSTRANSKÉ NÁMĚSTÍ	Charles Bridge Infant Jesus Church of St. Nicholas The Wallenstein Garden
7	6	JIRÁSKOVO NÁMĚSTÍ	Dancing House Charles Square New Town Hall Faust's House Church of St. Cyril and Methodius Slavic Island Žofín Palace
8		VÁCLAVSKÉ NÁMĚSTÍ	750-metre long and 60-metre wide boulevard Commercial and cultural centre of the metropolis
9	9	HLAVNÍ NÁDRAŽÍ	State Opera Main Train Station Fanta's Cafe

RED LINE			MAJOR ATTRACTIONS
1	2	HOTEL HILTON	Main Point Karlín Florenc Bus Station
2	5	U BRUSKÝCH KASÁREN	Old Castle Stairs Prague Castle Wallenstein Garden Government of the Czech Republic Franz Kafka Museum
3		PRAŽSKÝ HRAD	Prague Castle St. Vitus Cathedral Clash of the Titans Gate Matthew Gate Church of St. Benedict T. G. Masaryk Memorial
4		DLABAČOV	Petrín Hill with Lookout Tower Strahov and Lobkowitz gardens Strahov Monastery Monastery brewery
5		ŠVANDOVO DIVADLO	The funicular to Petřín Hill Petřín Lookout Tower Strelecký Island Kampa Island Sova's Mills (Museum Kampa)
6	7	JIRÁSKOVO NÁMĚSTÍ	Dancing House Charles Square New Town Hall Faust's House Church of St. Cyril and Methodius Slavic Island Žofín Palace
7		I.P. PAVLOVA	Church of St. Ludmila in Náměstí Míru (Peace Square) Antonín Dvořák's Museum Charles University Medical Faculty
8		KARLOV	Church of st. Virgin Mary and st. Charles the Great founded in 1350 by Charles IV
9	9	HLAVNÍ NÁDRAŽÍ	State Opera Main Train Station Fanta's Cafe